



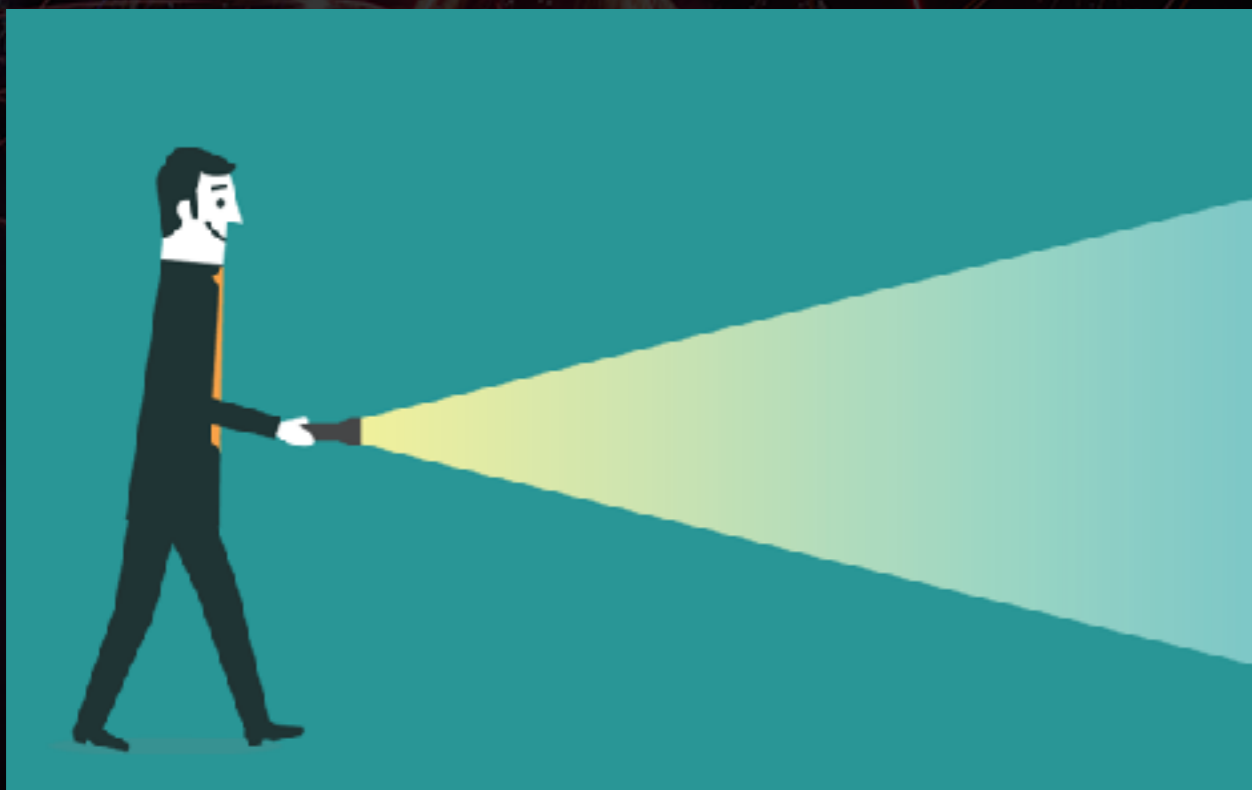
Light & Dark





Do you like the dark?

Scientists say that dark is the **absence** of light.



Absence is when something is not there, just like when you are absent from school.





In the dark

Think about the last time you were in the dark.

Was it really dark? Or was there a nightlight, light from a TV or light from the stars?

If there is no light at all, we cannot see!



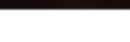


Sources of light

Light always has a **source**.

A light source is where the light begins.
It is where the light comes from.

How many sources of light can you
think of?



Sources of light





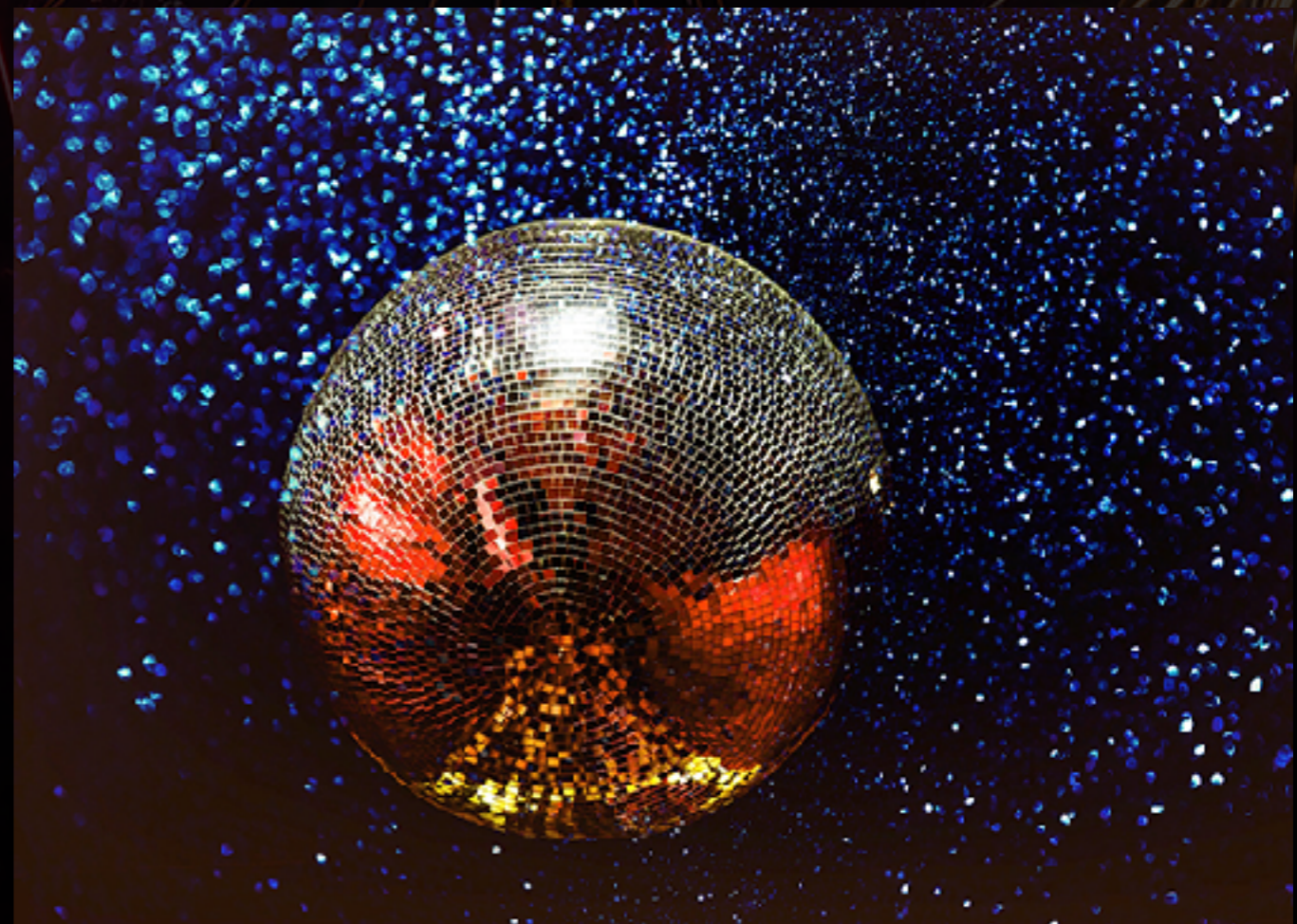
Reflectors of light

Don't be fooled. Not everything that is bright is a source of light.

Lots of people think that if something is shiny is is a source of light, but it is NOT!

Shiny things reflect light.

They don't make their own light.



These things all reflect light

